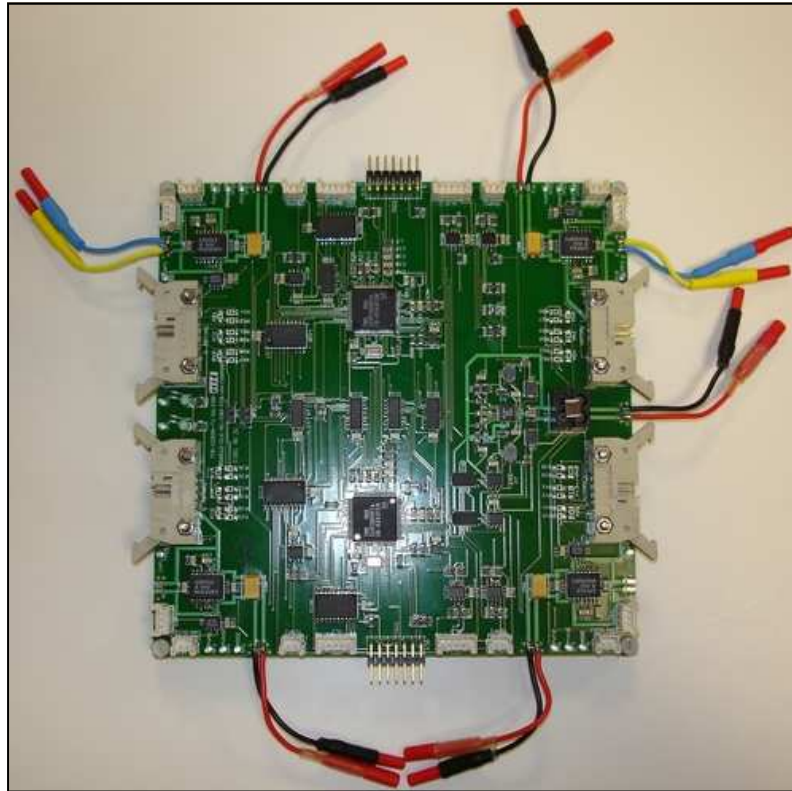


# 4 axis DC motors management board

## MMB 4xDC Type I



**Dimensions** : (L) 150mm \* (W) 150mm \* (H) 20mm — **Weight** : 143 grammes

### Characteristics :

Board operating voltage	: 7V à 25V
Microcontroller DSP	: 2 (tms 320 f2808) with 16 bits PWM résolution
DSP interconnection	: Full-duplex SPI link
Temperature range	: -40°C to + 85°C
RS232 serial link	: 4 (IMU, GPS, ...), 2 on each DSP
Bus CAN interface	: 2
Coder input	: 4 (PWM absolute position coders), 2 on each DSP
Motor supply	: 4 independent supplies
Maximal motor operating voltage	: 35v
Maximal motor current	: 2,5A

### Options :

- Temperature sensors (sonde PT100) for motors control

This 4 axis electronic board fits to every sensor and DC engine on the market. In order to obtain an optimal, robust and effective solution, GATES Technology provides the custom-built development of the embedded software.

Connected to an IMU, this electronic board allows to manage automatically a platform balance on 1, 2, 3 or 4 axis. Linked to a GPS, it can manage an automatic repositioning. Connected to a data link, it can also process remote control orders and return telemetry, ...

